

## Callibaetis Pullover Cripple

---

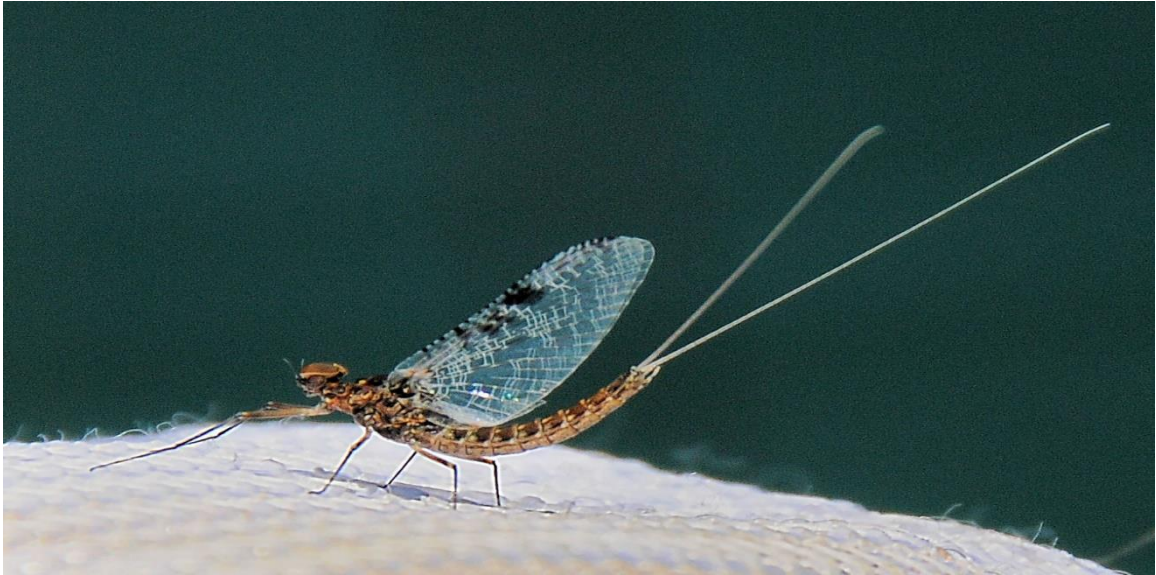
### *Sunriver Angler's Fly Tying Corner*

*By: Phil Fischer*



For this month's pattern, I have chosen a favorite fly for imitating Callibaetis during the hatch; the Callibaetis Pullover Cripple. This is an adaptation of both a Pablo's Cripple and a Quigly Cripple, choosing the best components of each pattern. Because cripples occur throughout the hatch, I will fish this pattern in tandem with dun or spinner imitations to give myself a better chance of success. It is a very effective fly on East Lake, Hosmer, Lava and others. On a recent Sunriver Anglers outing to Lake of the Dunes, it was responsible for many hookups.

Callibaetis mayfly hatches start occurring on local lakes in June and will last through the summer and into early fall. The Callibaetis hatch is unquestionably the most important mayfly hatch on the Cascade Lakes in Central Oregon. Trout key on the nymph stage prior to the hatch, the emerger stage during the hatch, the dun stage on the surface, and spinners returning to lay eggs to begin the cycle anew. Fishing techniques for this insect vary, from nymphs fished beneath an indicator, to wind drifted or stripped, to fishing dun and spinner patterns on the surface. Hatches usually occur in the later morning and extend into the afternoon on many days. To extend your fishing day, stock up on various stages of this insect to cover the hatch thoroughly.



### **Callibaetis Mayfly**

Callibaetis Mayflies hatch in the late morning to early afternoon and as they emerge, many have difficulty passing through the surface tension on the water and fail to fully emerge as an adult. These unfortunate insects often become trout food, as the fish key on insects that won't fly away. That is one of the main reasons I focus on fishing cripple patterns. Trout key on this stage as cripples are the easiest to intercept during a hatch of mayflies. Trout will swim along the surface and slurp down the cripples opportunistically. Time the rise with your cast and bingo, fish on! But often it can be a challenging time to fish due to the large number of flies on the water. This Callibaetis Cripple pattern is proven during the hatch. Give it a try a try. I think you will like the results!

### **Callibaetis Pullover Cripple Materials List:**

**Hook:** Firehole 419 (Barbless) or Daiichi 1180 Size 14-16 or similar

**Thread:** Tobacco Brown, 70 Denier

**Trailing Shuck:** Zelon in Mayfly Brown

**Abdomen:** Natural Turkey Biot in dark Brown

**Thorax:** Light Olive Dubbing (75%), UV Dubbing Tan (25%)

**Wing:** Zelon in Dark Dun

Tying instructions and steps are being published in video form, and can be found on the Sunriver Anglers Facebook page at <https://www.facebook.com/SunriverAnglers/>, or at the following YouTube URL: <https://youtu.be/YIdajWnzTSo>

Experiment with this pattern during the Callibaetis emergence at East Lake, or Lava, Hosmer or other favorite lake where Callibaetis thrive. If you have questions or would like additional information about the Callibaetis Spinner pattern, please don't hesitate to email me. Or if you have suggestions on future patterns to feature in this column, I welcome your input. I can be reached at [Philfischer@sbcglobal.net](mailto:Philfischer@sbcglobal.net).